

Fermentas
now sold as
Thermo Scientific

Introducing Thermo Scientific
Pierce Prestained and Unstained
Protein Ladders for easy protein
molecular weight determination.

Reach greater **highs** (and **lows**) with new protein ladder choices.



Fermentas
now sold as
Thermo Scientific

Thermo Scientific Pierce Protein Research Product Portfolio now includes protein ladders made with Fermentas technology. The Prestained Protein Ladders are recommended for approximate determination of molecular weight, monitoring the progress of the electrophoresis run and the efficiency of the protein transfer to the membrane during Western blotting procedures. For precise determination of molecular weights of target proteins in any buffer system, we recommend using our unstained protein ladders.

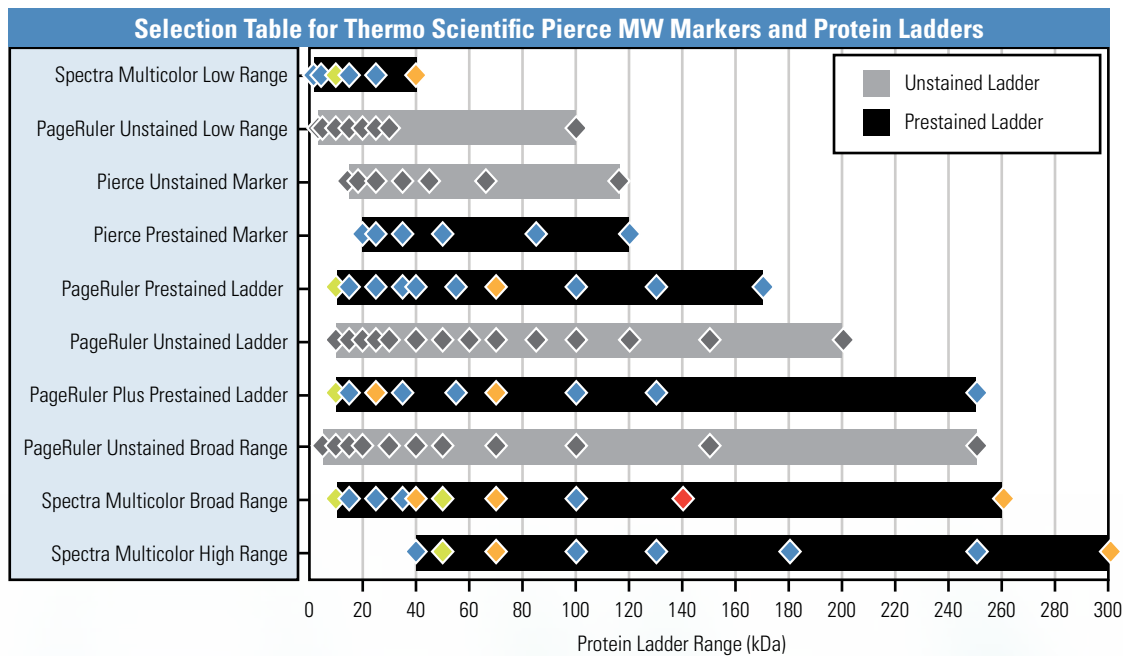
Highlights:

- **Cost effective** – high quality without the high price; average cost of less than \$1 per gel application
- **Performance** – sharp protein band resolution and consistent migration patterns provide easy molecular weight determination
- **Convenient** – protein ladders are ready to load with no heating or boiling required
- **Reliable** – exceptional lot-to-lot consistency and reproducibility

with new protein ladder choices.

Reach new heights in gel electrophoresis

Ordering Information		
Product #	Description	Pkg. Size
PI-26610	Pierce® Unstained Protein MW Marker	2 x 1mL
PI-26611	Pierce Unstained Protein MW Marker	25µL
PI-26612	Pierce Prestained Protein MW Marker	500µL
PI-26613	Pierce Prestained Protein MW Marker	25µL
PI-26614	PageRuler Unstained Protein Ladder	2 x 250µL
PI-26615	PageRuler Unstained Protein Ladder	25µL
PI-26616	PageRuler Prestained Protein Ladder	2 x 250µL
PI-26617	PageRuler Prestained Protein Ladder	10 x 250µL
PI-26618	PageRuler Prestained Protein Ladder	25µL
PI-26619	PageRuler Plus Prestained Protein Ladder	2 x 250µL
PI-26620	PageRuler Plus Prestained Protein Ladder	10 x 250µL
PI-26621	PageRuler Plus Prestained Protein Ladder	25µL
PI-26634	Spectra™ Multicolor Broad Range Protein Ladder	2 x 250µL
PI-26623	Spectra Multicolor Broad Range Protein Ladder	10 x 250µL
PI-26624	Spectra Multicolor Broad Range Protein Ladder	50µL
PI-26625	Spectra Multicolor High Range Protein Ladder	2 x 250µL
PI-26626	Spectra Multicolor High Range Protein Ladder	50µL
PI-26628	Spectra Multicolor Low Range Protein Ladder	250µL
PI-26629	Spectra Multicolor Low Range Protein Ladder	25µL
PI-26630	PageRuler Unstained Broad Range Protein Ladder	2 x 250µL
PI-26631	PageRuler Unstained Broad Range Protein Ladder	25µL
PI-26632	PageRuler Unstained Low Range Protein Ladder	2 x 250µL
PI-26633	PageRuler Unstained Low Range Protein Ladder	25µL
PI-84785	SuperSignal Molecular Weight Protein Ladder	250µL
PI-84786	SuperSignal Enhanced Molecular Weight Protein Ladder	250µL



The bars indicate the ranges of each product. Diamonds indicate the location and color of protein bands in each product.

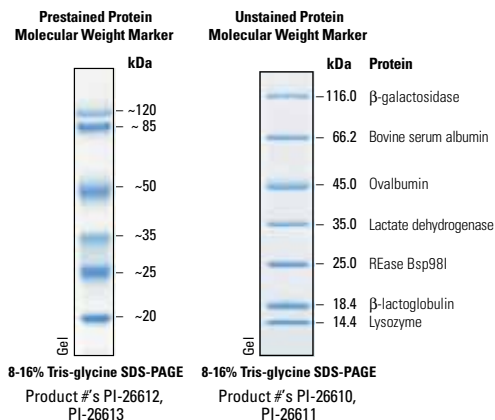
Thermo Scientific Pierce Protein Ladders						Application							
						SDS PAGE				Western blotting			
Product Name	Product #	Former Fermentas Part #	# Proteins	MW Range	Reference Bands	Protein MW Determination	Protein band visualization	Monitoring electrophoresis run	Coomassie/Silver/Fluorescent Staining	NIR detection	Monitoring protein transfer	Chemiluminescent band visualization	
Unstained protein ladders	PageRuler Unstained Broad Range Protein Ladder	PI-26630	SM1881	11	5-250kDa	20, 50 and 100kDa	Best	—	—	Best	—	Good [†]	
	PageRuler Unstained Low Range Protein Ladder	PI-26632	SM1891	8	3.4-100kDa	25kDa	Best	—	—	Best	—	Good [†]	
	PageRuler Unstained Protein Ladder	PI-26614	SM0661	14	10-200kDa	50kDa	Good	—	—	Good	—	Good [†]	
	Pierce Unstained Protein Molecular Weight Marker	PI-26610	SM0431	7	14.4-116kDa	—	Good	—	—	Good	—	—	
	SuperSignal Molecular Weight Protein Ladder	PI-84785, PI-84786	—	8	20-150kDa	—	Good	—	—	Good	—	Good	Best
Prestained protein ladders	PageRuler Prestained Protein Ladder	PI-26616, PI-26617	SM0671, SM0672	10	10-170kDa	Green 10kDa; Orange 70kDa	Good	Good	Good	—	Good [†]	Good	—
	PageRuler Plus Prestained Protein Ladder	PI-26619, PI-26620	SM1811, SM1812	9	10-250kDa	Green 10kDa; Orange 25 and 70kDa	Good	Good	Good	—	Good [†]	Good	—
	Spectra Multicolor Broad Range Protein Ladder	PI-26634, PI-26623	SM1841, SM1842	10	10-260kDa	Green 10 and 50kDa; Orange 40, 70 and 260kDa; Pink 140kDa	Good	Best	Best	—	Good [†]	Best	—
	Spectra Multicolor Low Range Protein Ladder	PI-26628	SM1861	6	1.7-40kDa	Green 10kDa; Orange 40kDa	Good	Best	Best	—	Good [†]	Best	—
	Spectra Multicolor High Range Protein Ladder	PI-26625	SM1851	8	40-300kDa	Green 50kDa; Orange 70 and 300kDa	Good	Best	Best	—	Good [†]	Best	—
	Pierce Prestained Protein Molecular Weight Marker	PI-26612	SM0441	6	20-120kDa	—	Good	Good	Good	—	Good	Good	—

[†] with Strep-Tactin[®] HRP or AP Conjugates

[‡] Blue and green prestained bands fluoresce in NIR region

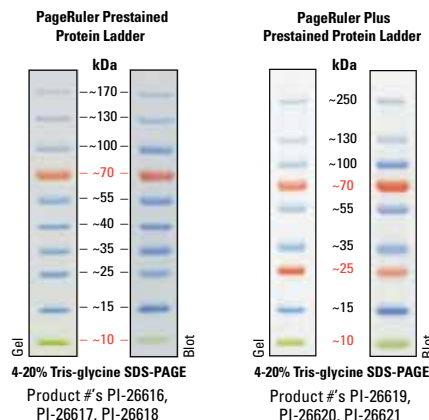
Thermo Scientific Pierce Protein Molecular Weight Marker

Thermo Scientific Pierce Prestained Protein Molecular Weight Markers are designed to monitor protein migration during SDS-polyacrylamide gel electrophoreses and monitor protein transfer onto membranes. Pierce Unstained Protein Weight Markers produce sharp bands on SDS-polyacrylamide gel following staining with Coomassie-based or silver stains and are recommended for accurate sizing of proteins on SDS PAGE and Western blots.



Thermo Scientific PageRuler Prestained Protein Ladders

The Thermo Scientific PageRuler and PageRuler Plus Prestained Protein Ladders are comprised of highly purified recombinant proteins bound to three different chromophores for easy protein molecular weight determination. The green and orange reference bands in the PageRuler products provide easy orientation of the protein bands.

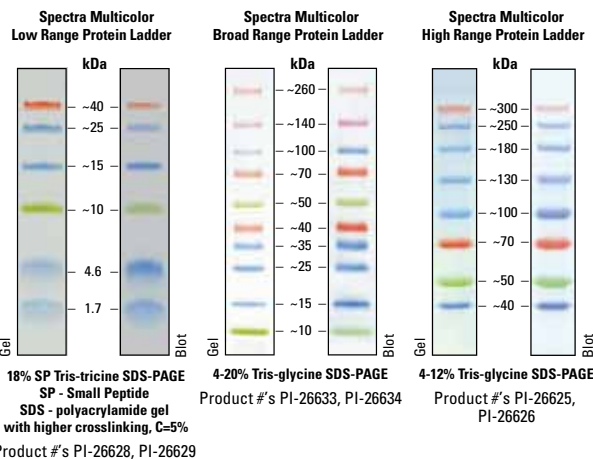
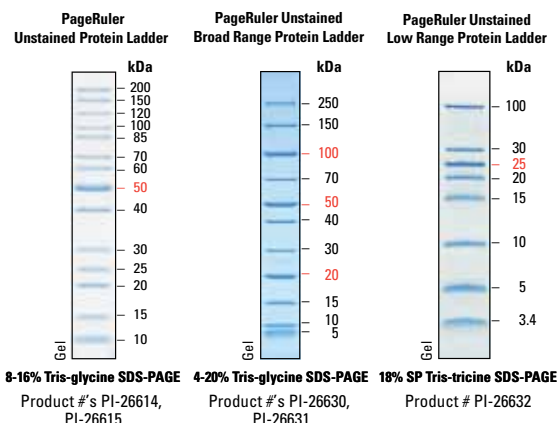


Thermo Scientific PageRuler Unstained Protein Ladders

Thermo Scientific PageRuler Unstained Protein Ladders are mixtures of recombinant, highly purified proteins designed for accurate sizing of proteins by SDS-PAGE. The ladders resolve into clearly identifiable sharp bands when analyzed by SDS-PAGE and stained with Coomassie Blue or silver stain. Each ladder contains protein bands of greater intensity which serve as reference bands. Proteins can be detected on Western blots by staining with Ponceau S, Coomassie Blue, (except for 3.4kDa and 5kDa polypeptides) or by using Strep-Tactin conjugates.

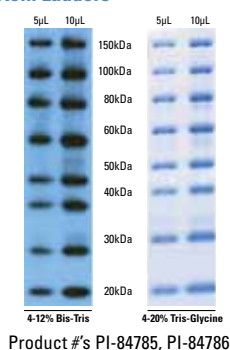
Thermo Scientific Spectra Multicolor Protein Ladders

Four different chromophores bound to proteins in Thermo Scientific Spectra Multicolor Broad Range Protein Ladders produce a brightly colored ladder with an easy-to-remember pattern. The Spectra Multicolor High Range and Low Range Protein Ladders are designed for large and small protein analysis, respectively.



Thermo Scientific SuperSignal Molecular Weight Protein Ladders

The SuperSignal Molecular Weight Protein Ladders contain a ready-to-use stabilized mixture of eight recombinant proteins ranging in size from 20 to 150kDa. These recombinant proteins bind antibodies used in the Western blot through an IgG binding site. The protein markers can then be visualized either using appropriate substrates for enzyme-labeled antibodies or via fluorescent dye-labeled antibodies. Use the SuperSignal Enhanced Molecular Weight Protein Ladders with mouse monoclonals.



Electrophoresis Gel Stains Guide

This 21-page brochure summarizes the key features and benefits of Thermo Scientific Pierce Staining Products. Easy-to-follow protocols with schematics demonstrate just how easy staining can be. To download this technical handbook, visit www.thermoscientific.com/pierce



In the United States:
For customer service, call 1-800-766-7000.
To fax an order, use 1-800-926-1166.
To order online: www.fishersci.com

In Canada:
For customer service, call 1-800-234-7437.
To fax an order, use 1-800-463-2996.
To order online: www.fishersci.ca

